



Inclusive Education: Working Effectively with your Child's School

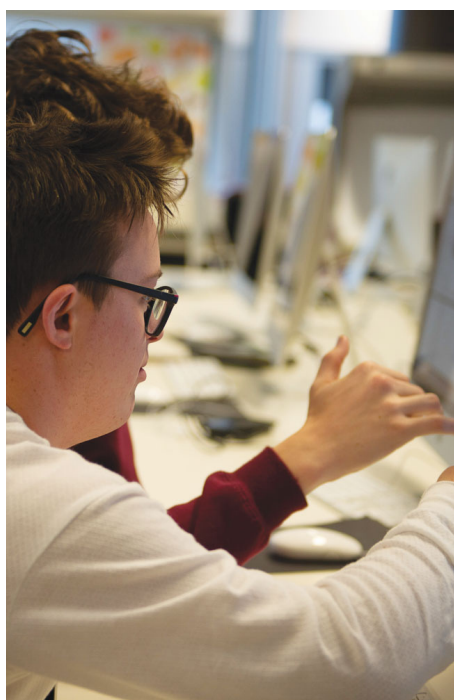
CHARLEVILLE RSL MEMORIAL CLUB

Tuesday 2nd March, 2021
9:15AM - 2:30PM



Come along to a free workshop for parents of students with disability in state schools to learn about:

- Using your positive vision to help your child meet their goals in school and in life
- Building an effective relationship with your school
- The Department's Inclusive Education Policy
- What good school inclusion looks like
- Communication tips and advocacy skills
- Overcoming challenges and who can help



These workshops are delivered by CRU to assist families of students with disability to be clear, informed, confident and connected so they can work as respected and valued partners in their children's education.

**To book your place or find out more
go to cru.org.au/events
or call (07) 3844 2211**



Proudly supported by
the Queensland Government
through the
Department of Education



**Queensland
Government**

Event Details

DATE: Tuesday 2nd March, 2021

TIME: Sign in from 8:45AM for a 9:15AM start. Concludes at 2:30PM. Morning tea & lunch is provided.

VENUE: Charleville RSL Memorial Club
37 Watson St, Charleville QLD 4470.

BOOK: Register by Monday 22nd February 2021 via this link cru.org.au/families-for-inclusive-education or contact CRU.

Who is CRU?

The Community Resource Unit Ltd. (CRU) has a 30 year track record of working throughout Queensland to promote positive change so that people with disabilities can belong to and participate in community life.

Assistance to attend:

There is a small amount of funding available to families who need to travel to attend workshops or who require other support. If you require any assistance to attend or participate in this event please contact CRU to apply for this assistance.

For more information **call CRU on (07) 3844 2211** or **email cru@cru.org.au**



Community Resource Unit Ltd.

ABN: 16 143 460 250 ACN: 617 860 009
Level 2, 43 Peel Street
P.O. Box 3722
South Brisbane QLD 4101

Phone: (07) 3844 2211
Email: cru@cru.org.au
Web: www.cru.org.au



Community
Resource
Unit Ltd.

Expanding Ideas; Creating Change